

Features

- Normally Open (SPST) contact form.
- Miniature power relay, high capability of 30A.
- High impulse current of 65A and high surge voltage of 10000V withstand.
- Miniature relay for high density mounting requirement.

Safety Approval

UL, C-UL File No.: E190598
VDE File No.: 40007793
CQC File No.: CQC02001002130

Contact Capacity

Model	SFD
Nominal switching capacity (res. load)	30A 250VAC
Max. switching current	30A
Max. switching voltage	250VAC
Max. switching power	7,500VA

Charateristic Data

Contact material	Silver alloy	
Initial contact resistance (at 6VDC 1A)	50mΩ Max.	
Operate time (at nominal volt.)	20msec. Max.	
Release time (at nominal volt.)	5msec. Max.	
Initial insulation resistance	1,000MΩ Min.(DC500V)	
Initial dielectric strength	Between open contacts: AC1,200V, 50/60Hz 1Min.	
	Between coil and contact: AC4,000V, 50/60Hz 1Min.	
Vibration resistance	Functional	10 ~ 55Hz at double amplitude of 1.5 mm
	Destructive	10 ~ 55Hz at double amplitude of 1.5 mm
Shock resistance	Functional	10G Min.
	Destructive	100G Min.
Endurance (operations)	Mechanical (at 7,200 ops./h)	10,000,000
	Electrical (at 600 ops./h)	100,000
Ambient temperature	-40°C ~ +105°C (no condensation)	
Unit weight	Approx. 55.0 g	

Coil Data (at 20°C)

Nominal voltage (VDC)	Nominal operating current ± 10% (mA)	Coil resistance ± 10% (Ω)	Max. allowable voltage	Pick-up voltage (Max.)	Drop-out voltage (Min.)	Nominal operating power
3	400.00	7.5	130 % of nominal voltage	70 % of nominal voltage	10 % of nominal voltage	Approx. 1.20W
5	240.00	20.8				
6	200.00	30				
9	134.00	67				
12	100.00	120				
18	66.67	270				
24	50.00	480				
48	25.00	1,920				
60	20.00	3,000				

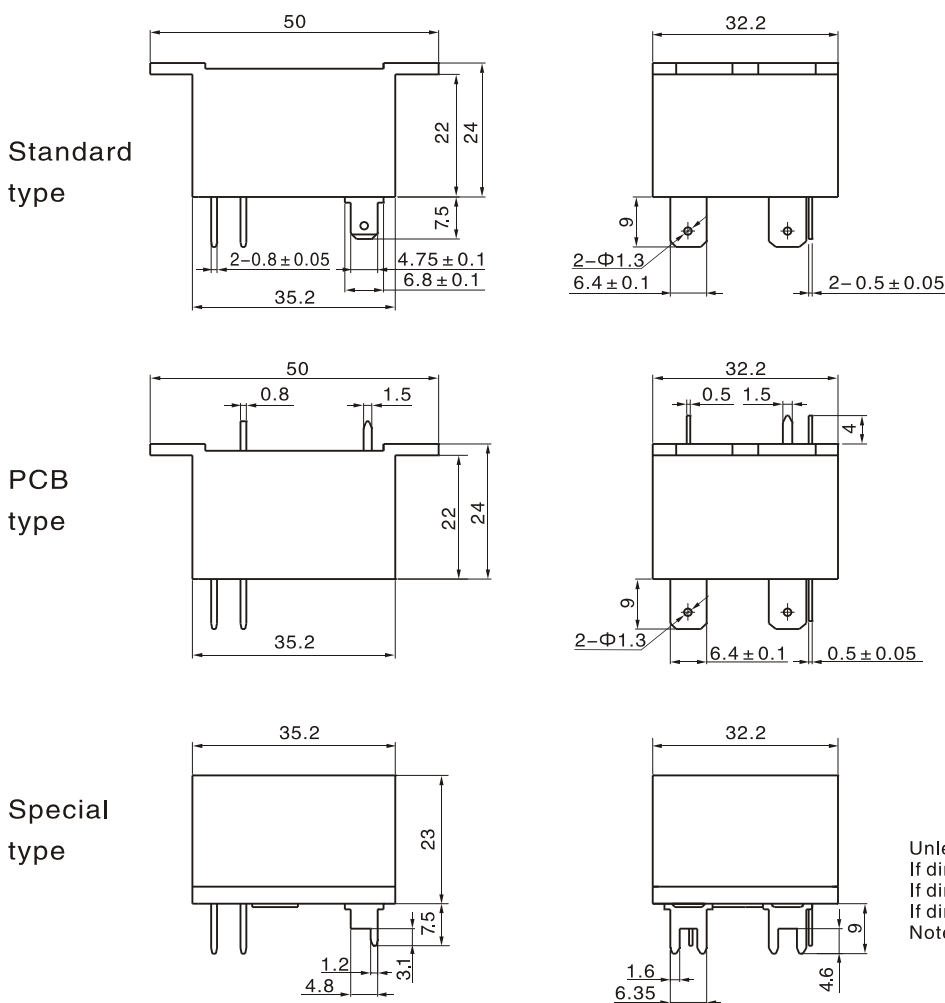
Safety Approval Ratings

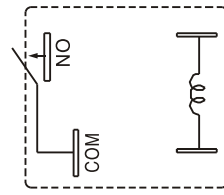
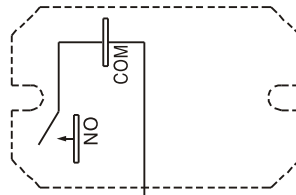
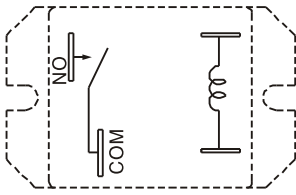
Approval	CQC	VDE	UL/CUL
File No.	CQC02001002130	40007793	E190598
Approved ratings	30A 250VAC	27A 250VAC 30A 250VAC (T type)	30A 250VAC 2HP 250VAC

Ordering Information

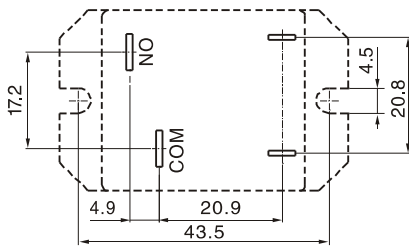
Nomenclature	
SFD -1 12 D M P F -XX	Special Parameter: Nil-Standard type, Letter or number-Special requirement
	Insulation System: Nil-Standard, B-Class B, F-Class F
	Terminal Type: Nil-Standard, P-PCB, T-Special type
	Contact Form: M-Form A
	Coil Power: D-1.20W
	Coil Voltage (VDC): 03, 05, 06, 09, 12, 18, 24, 48, 60
	Number of Poles: 1-1 Pole
	Type Designation: SFD

Outline Dimensions, Wiring Diagram, Mounting Holes (unit: mm)

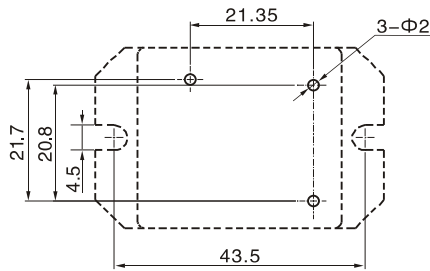




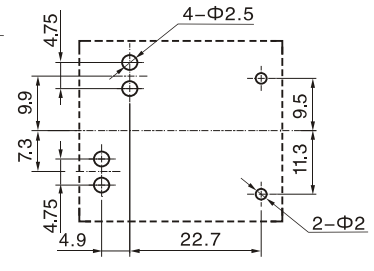
Wiring Diagram (bottom view)



Standard type



PCB type



Special type

Mounting Holes (bottom view)

Typical Applications

- Motor control, compressor control
- Home appliances and industrial control equipment

Characteristic Curves

