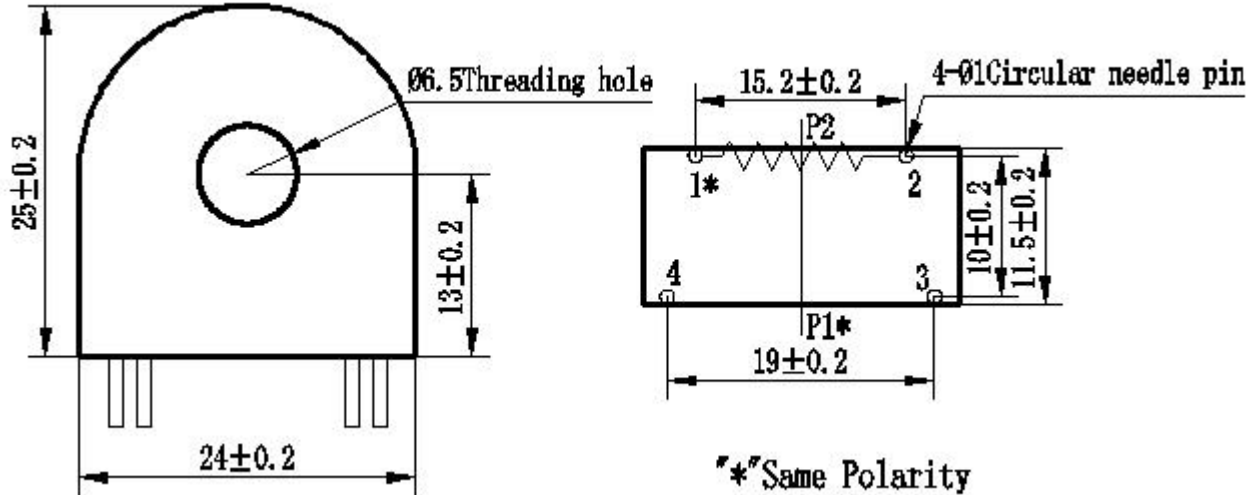


ZMCT116A Current Transformer

Small size, high accuracy, good consistency, for current and power measurement

Structural parameters:



Remarks: Primary input: straight-through type (make the measured circuit be through the hole)
Secondary output: 1、2 pin empty pins: 3、4 pin

Front view

Bottom view

The main technical parameters:

Model	ZMCT116A
input current	0~70A (100Ω)
Rated output current	2mA at 5A
turns ratio	2500:1
phase angle error	≤20' (input 1A, sampling resistor 100Ω)
current range	0~70A (sampling resistor 100Ω)
linearity	0.1% (5%~120%)
Permissible error	-0.2%≤f≤+0.2% (input 1A, sampling resistor 100Ω)
isolation voltage	4500V
application	current and power measurement
Encapsulation	Epoxy
installation	PCB mounting (Pin Length>3mm)
operating temperature	-40℃~+85℃

Direction for use:

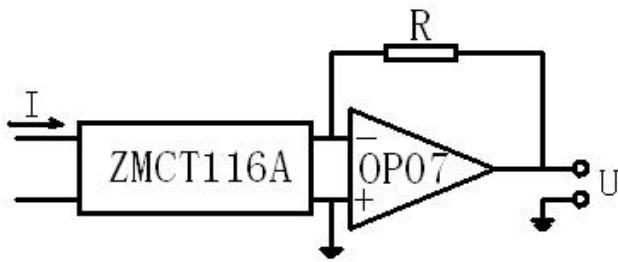
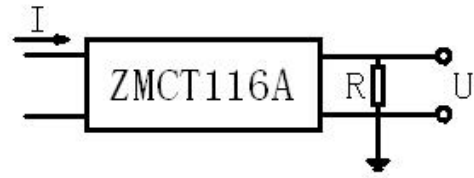


Figure I



$$U = \frac{I}{2500} \cdot R$$

I: input current
R: sampling resistor
U: sampling voltage

Figure II

1. ZMCT116A used for measurement. Typical usage is shown in Figure 1 and Figure 2. R is a sampling resistor.
2. Empty pin can not be grounded.

Material list:

ZMCT116A Material List					
Material		Spec, model	Manufacturer	UL code	SGS
core	Nanocrystalline core	∅12×19×6.5	XIN DA KE	—	yes
	Core box	PBT	Shanghai Zhang Dalong Plastic Electric Co., Ltd	E332375	yes
	Spongy cushion	∅12×19×6.5 thickness 1.8	Shanghai Zhang Dalong Plastic Electric Co., Ltd	—	yes
	Tape	Flame retardant, Environmental protection, V0 105 degrees, (Plaster) Yellow Glue	Jingjiang Yahua	E165111	yes
	Enameled wire	2UEW, ∅0.08, 2500T	Elektrisola	E258243	yes
case	shell	CT10-1P	Qingdao Qinke Engineering Plastics CO., Ltd	E238981	yes
	Needle	1.0*15	Shanghai Jiatong	—	yes
	EPOXY	9201	Tianjin Xinqiao	E196959	yes
	Solder	YTB101	Hangzhou Yatong	—	yes