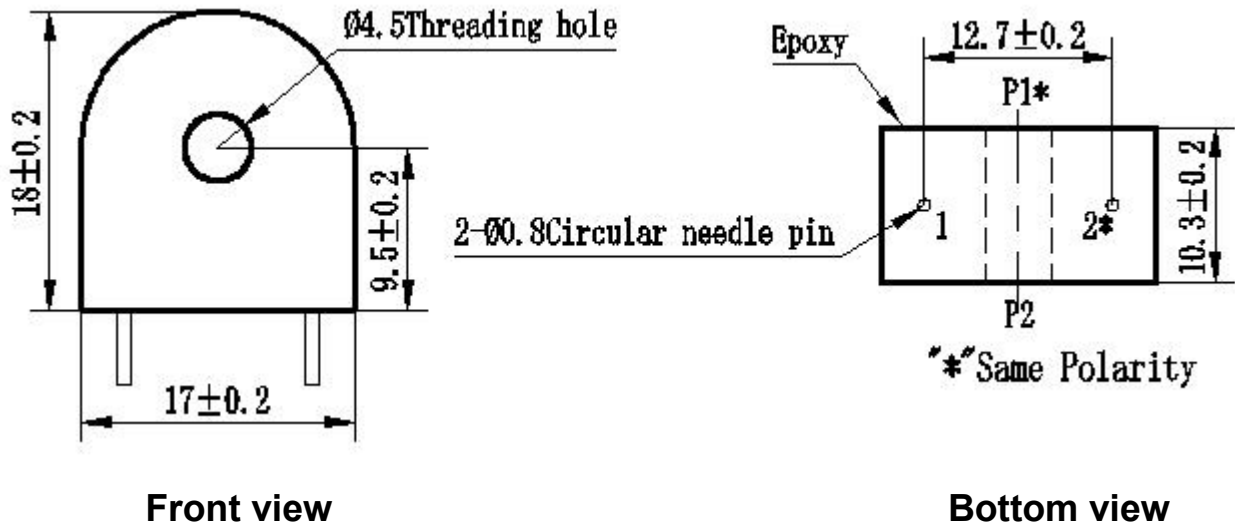


# ZMCT204A current transformer

Small size, high accuracy, good consistency, for accurate current and power measurement

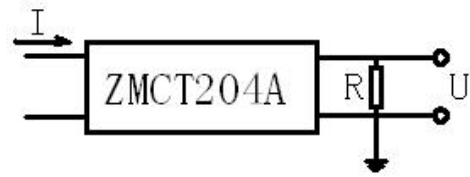
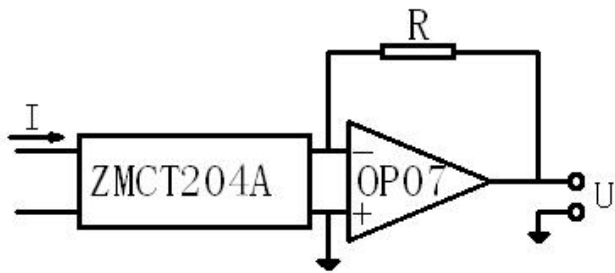
## Structural parameters:



## The main technical parameters:

Model	ZMCT204A
input current	0~20A (sampling resistor 100Ω)
Rated output current	2.5mA at input 5A
turns ratio	2000:1
phase angle error	≤20' (input 1A, sampling resistor 100Ω)
Accuracy class	0.2
linearity	≤0.2% (5%~120%)
Permissible error	-0.2% ≤ f ≤ +0.2% (input 1A, sampling resistor 100Ω)
isolation voltage	4500V
application	Precise current and power measurement
Encapsulation	Epoxy
installation	PCB mounting (Pin Length>3mm)
operating temperature	-40℃~+85℃

Direction for use:



$$U = \frac{I}{2000} \cdot R$$

I: input current  
R: sampling resistor  
U: sampling voltage

Figure I

Figure II

1. The typical usage of the product is for the active output (Figure I ). R is a sampling resistor.
2. The product can be directly through the resistance sampling, easy to use (Figure II ).