



CQC File No.:CQC02001002123

- 20A switching capability Ultra-miniature, standard PC layout .
- Low power consumption 0.6W only
- Highresistancetovibrationandshock

SPECIFICATIONS

Contact

Arrangement	1a, 1b, 1c	
Contact material	Silver alloy	
Contact resistive (By voltage drop 1A 6VDC)	50mΩ Max.	
Rating Resistive load	5A	250VAC
	7A	125VAC
	20A	14VDC
CQC rating	5A/20A	250VAC
Max.switching voltage	250VAC	
Max.switching current	20A	
Max.switching power	1,250VA	280W
Exoected life(min.ope)	Mechanical (at 300 cpm)	1X10 ⁷
	Electrical (at 30 cpm)	1X10 ⁵

Characteristics

Operate time	10 msec.Max.	
Release time	5 msec.Max.	
Operating humidity	35~95%RH	
Initial breakdown voltage	Between contact and coil	500VAC (50/60Hz) for 1 min.
	Between open contacts	500VAC (50/60Hz) for 1 min.
Insulation resistance	100MΩ Min.(500VDC)	
Ambient temperature	-40℃ ~ +85℃	
Shock resistance	Functional	10G Min.
	Destruction	100G Min.
Vibration resistance	Functional	10 TO 55 Hz at double Amplitude of 1.5mm
	Destruction	10 TO 55 Hz at double Amplitude of 1.5mm
Unit weight	Approx. 6g	

Coil

Nominal operating power	0.6W
-------------------------	------

TYPICAL APPLICATION

Application domestic appliances, office machines, Automotive bug. Etc.

ORDERING INFORMATION

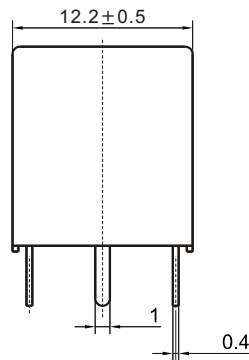
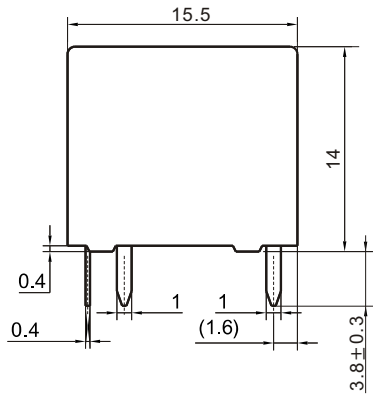
	SD	S	1	12	D	M	
Type	Protective construction	Number of pole	Coil type	Coil sensitivity	Contact form		
SD	NIL:Flux type S:Seadled type	1:1 pole	03,05,06,09, 10,12,18,24	D:0.6W	M:1 Form A B:1 Form B Nil:1 Form C		

COIL(at 20°C)

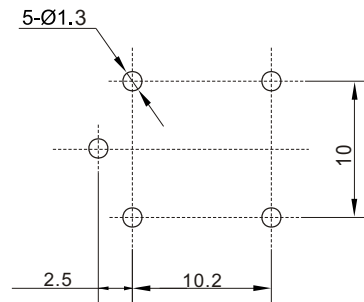
SD

Voltage code	Nominal voltage (VDC)	Nominal current (mA)	Coil resistance ($\Omega \pm 10\%$)	Drop-out voltage (VDC)	Pick-up voltage (VDC)	Nominal operating power (W)	Max allowable voltage (VDC)
03	3	200.00	15	5%Min.	70%Max.	0.60	130% of nominal voltage
05	5	120.19	41.6				
06	6	100.00	60				
09	9	66.67	135				
10	10	55.56	180				
12	12	50.00	240				
18	18	33.33	540				
24	24	25.00	960				

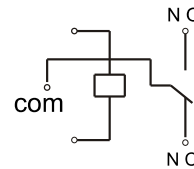
OUTLINE DIMENSIONS, WIRING DIAGRAM AND PCB BOARD LAYOUT(unit:mm)



PCB layout



Wiring Diagram



CHARACTERISTICS CURVE

