



UL,C-UL File No.:E197454
TUV File No.:40003503
CQC File No.:CQC04001009433

- High contact capacity with superior inrush current characteristics
- Excellent high heat-resistance
- High dielectric strength:10,000V surge 10,000V

SPECIFICATIONS

Contact

Arrangement	2a	
Contact material	Silver alloy	
Contact resistive (By voltage drop 1A 6VDC)	50mΩ Max.	
UL/C-UL rating		
Resistive load (cos φ =1)	25A	277VAC
Motor load	2HP	277VAC
VDE rating		
Resistive load (cos φ =1)	25A	250VAC
	25A	120VAC
Inductive load (cos φ =0.75)	25A	250VAC
	25A	120VAC
CQC rating	25A/100A	250VAC
Exoected life(min.ope)	Mechanical (at 180 cpm)	1X10 ⁷
	Electrical (at 20 cpm)	1X10 ⁵

Characteristics

Operate time	30 msec.Max.	
Release time	30 msec.Max.	
Operating humidity	45~85%RH	
Initial breakdown voltage	Between contact and coil	4,000VAC (50/60Hz) for 1 min.
	Between open contacts	2,000VAC (50/60Hz) for 1 min.
Insulation resistance	100MΩ Min.(500VDC)	
Ambient temperature	-40℃ ~ +85℃	
Temperature rise(Max.)	35℃	
Shock resistance	Functional	10G Min.
	Destruction	100G Min.
Vibration resistance	Functional	10 TO 55 Hz at double Amplitude of 1.5mm
	Destruction	10 TO 55 Hz at double Amplitude of 1.5mm
Unit weight	Approx. 100g	

Coil

Nominal operating power	1.9W, 1.7-2.5W
-------------------------	----------------

TYPICAL APPLICATION

1. Family electrical equipment
2. Air controlling equipment
3. Office equipment,etc.

ORDERING INFORMATION

Type	Number of pole	Coil type	Coil sensitivity	Contact form	Assembly type
SFC	2:2 Pole	AC:12,24,120,240 DC:12,24, 48,110	A:1.7-2.5VA D:1.9A	M:2 Form A	B: Screw Terminal Type T: Tab Terminal Type

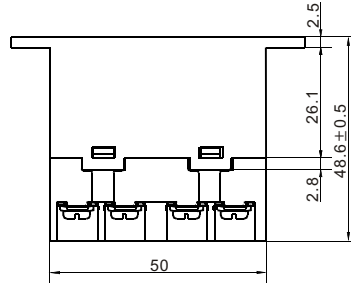
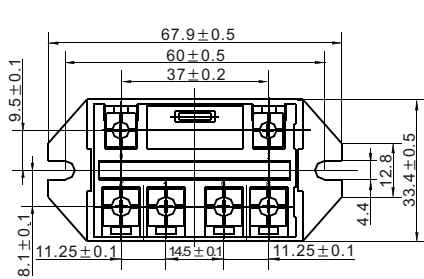
COIL(at 20°C)

SFC

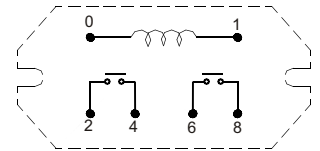
Type	Voltage code	Nominal voltage (VDC)	Nominal current (mA)	Coil resistance ($\Omega \pm 10\%$)	Drop-out voltage (VDC)	Pick-up voltage (VDC)	Nominal operating power (W)	Max allowable voltage (VDC)
DC	12	12	157.89	76	5%Min.	75%Max.	Abt.1.9	130% of nominal voltage
	24	24	79.21	303				
	48	48	39.67	1,210				
	110	110	17.27	6,368				
AC	12	12	226.42~206.90	53~58	20%Min.	70%Max.	2.5~2.7VA	
	18	18	84.51~ 78.26	213~230				
	120	120	24.00~21.82	5,000~5,500				
	240	240	11.48~ 11.11	20,900~21,600				

OUTLINE DIMENSIONS, WIRING DIAGRAM AND PC BOARD LAYOUT(unit:mm)

SFC-XXXXB



Wiring Diagram



SFC-XXXXT

