



Features

- Small size with 10A switching capability.
- Sealed type available.
- High dielectric strength.

Safety Approval

UL, C-UL File No.: E179745
TUV File No.: R50143449
CQC File No.: CQC02001002126

Contact Capacity

Model	SRDH
Nominal switching capacity (res. load)	10A 250VAC
Max. switching current	10A
Max. switching voltage	250VAC
Max. switching power	2,500VA

Charateristic Data

Contact material	Silver alloy	
Initial contact resistance (at 6VDC 1A)	50mΩ Max.	
Operate time (at nominal volt.)	10msec. Max.	
Release time (at nominal volt.)	5msec. Max.	
Initial insulation resistance	100MΩ Min.(DC500V)	
Initial dielectric strength	Between open contacts: AC1,000V, 50/60Hz 1Min.	
	Between coil and contact: AC2,000V, 50/60Hz 1Min.	
Vibration resistance	Functional	10 ~ 55Hz at double amplitude of 1.5 mm
	Destructive	10 ~ 55Hz at double amplitude of 1.5 mm
Shock resistance	Functional	10G Min.
	Destructive	100G Min.
Endurance (operations)	Mechanical (at 10,800 ops./h)	10,000,000
	Electrical (at 1,800 ops./h)	100,000
Ambient temperature	-40°C ~ +105°C (no condensation)	
Unit weight	Approx. 11.0 g	

Coil Data (at 20°C)

Nominal voltage (VDC)	Nominal operating current ± 10% (mA)	Coil resistance ± 10% (Ω)	Max. allowable voltage	Pick-up voltage (Max.)	Drop-out voltage (Min.)	Nominal operating power
3	120.00	25	150 % of nominal voltage	75 % of nominal voltage	5 % of nominal voltage	Approx. 0.36W
5	71.43	70				
6	60.00	100				
9	40.00	225				
12	30.00	400				
18	20.00	900				
24	15.00	1,600				
48	7.50	6,400				

Safety Approval Ratings

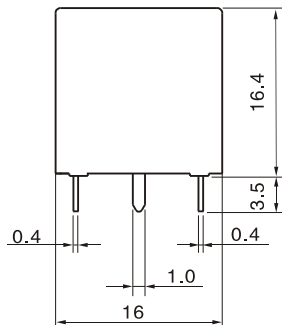
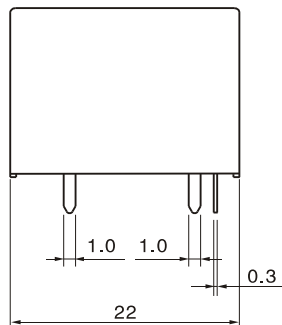
Approval	CQC	TUV	UL/CUL
File No.	CQC02001002126	R50143449	E179745
Approved ratings	10A 250VAC	NO: 10A 240VAC 10A 24VDC NC: 8A 240VAC 8A 24VDC	10A 240VAC, Resistive 10A 120VAC, Resistive 10A 28VDC, Resistive 3A 125VAC, General Use

Ordering Information

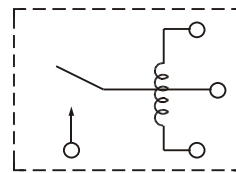
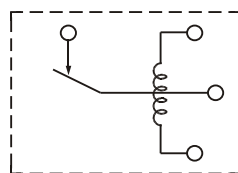
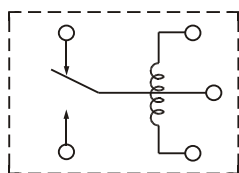
Nomenclature

SRDH	-S	-1	12	D	M	1	-F	-XX	Special Parameter: Nil-Standard type, Letter or number-Special requirement
									Insulation System: Nil-Standard, B-Class B, F-Class F
									Contact Material: Nil-AgSnO ₂ , 1-AgCdO
									Contact Form: Nil-Form C, B-Form B, M-Form A
									Coil Power: D-0.36W
									Coil Voltage (VDC): 03, 05, 06, 09, 12, 18, 24, 48
									Number of Poles: 1-1 Pole
									Protective Construction: S-Flux proofed, SH-Sealed type washable
									Type Designation: SRDH

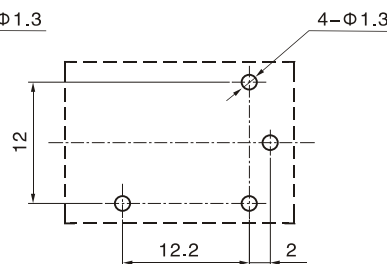
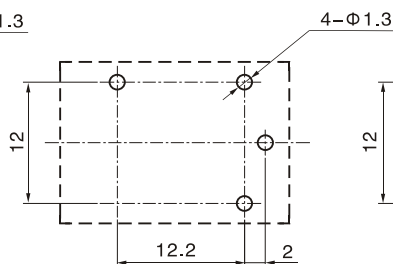
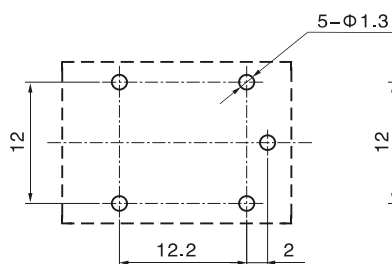
Outline Dimensions, Wiring Diagram, P.C. Board Layout (unit: mm)



Unless otherwise specified:
 If dimension < 1mm, tolerance: $\pm 0.2\text{mm}$;
 If dimension 1~5mm, tolerance: $\pm 0.3\text{mm}$;
 If dimension > 5mm, tolerance: $\pm 0.4\text{mm}$.
 Note: 1. Extended terminal dimension is dimension before soldering.
 2. Tolerance of P.C.B. layout: $\pm 0.1\text{mm}$.



Wiring Diagram (bottom view)



1c

1b

1a

P.C.B. Layout (bottom view)

Typical Applications

- Home appliances such as air conditioner, coffee pot, heater, etc.
- Automation and instrument
- Office equipment
- Audio system
- Automotive control device, etc.

Characteristic Curves

