



**Features**

- High contact capability: 12A switching capability.
- Sealed type available.
- Low coil power consumption.
- 2.9kV dielectric strength between coil and contact product available.

**Safety Approval**

UL, C-UL File No.: E179745  
CQC File No.: CQC02001002122

**Contact Capacity**

Model	SRI
Nominal switching capacity (res. load)	7A 250VAC
Max. switching current	12A
Max. switching voltage	250VAC
Max. switching power	1,750VA

**Charateristic Data**

Contact material	Silver alloy	
Initial contact resistance (at 6VDC 1A)	50mΩ Max.	
Operate time (at nominal volt.)	10msec. Max.	
Release time (at nominal volt.)	5msec. Max.	
Initial insulation resistance	100MΩ Min.(DC500V)	
Initial dielectric strength	Between open contacts: AC1,000V, 50/60Hz 1Min.	
	Between coil and contact: AC2,000V, 50/60Hz 1Min.	
Vibration resistance	Functional	10 ~ 55Hz at double amplitude of 1.5 mm
	Destructive	10 ~ 55Hz at double amplitude of 1.5 mm
Shock resistance	Functional	10G Min.
	Destructive	100G Min.
Endurance (operations)	Mechanical (at 10,800 ops./h)	10,000,000
	Electrical (at 1,800 ops./h)	100,000
Ambient temperature	-40°C ~ +105°C (no condensation)	
Unit weight	Approx. 9.1g	

**Coil Data (at 20°C)**

Nominal voltage (VDC)	Nominal operating current ± 10% (mA)	Coil resistance ± 10% (Ω)	Max. allowable voltage	Pick-up voltage (Max.)	Drop-out voltage (Min.)	Nominal operating power
3	150.00	20	130 % of nominal voltage	75 % of nominal voltage	5 % of nominal voltage	Approx. 0.45W
5	90.00	56				
6	75.00	80				
9	50.00	180				
12	37.50	320				
18	25.00	720				
24	18.75	1,280				
48	9.38	5,120	130 % of nominal voltage	75 % of nominal voltage	5 % of nominal voltage	Approx. 0.36W
3	120.00	25				
5	71.43	70				
6	60.00	100				
9	40.00	225				
12	30.00	400				
18	20.00	900				
24	15.00	1,600				
48	7.50	6,400				

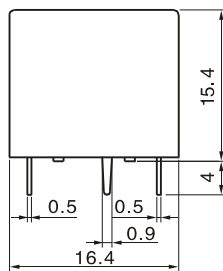
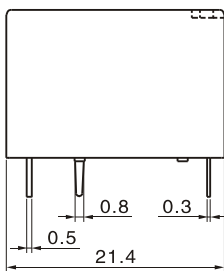
### Safety Approval Ratings

Approval	CQC	UL/CUL
File No.	CQC02001002122	E179745
Approved ratings	7A 250VAC	12A 125VAC, Resistive 7A 250VAC, Resistive 12A 28VDC, Resistive

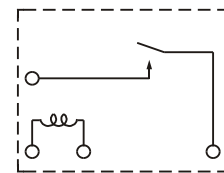
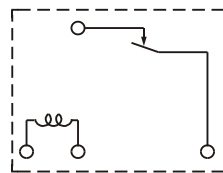
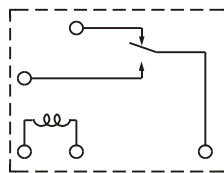
### Ordering Information

Nomenclature	
SRI -S -1 12 D M 1 - F -XX	Special Parameter: Nil-Standard type, Letter or number-Special requirement
	Insulation System: Nil-Standard, B-Class B, F-Class F
	Contact Material: Nil-AgSnO <sub>2</sub> , 1-AgCdO
	Contact Form: Nil-Form C, B-Form B, M-Form A
	Coil Power: D-0.45W, L-0.36W
	Coil Voltage (VDC): 03, 05, 06, 09, 12, 18, 24, 48
	Number of Poles: 1-1 Pole
	Protective Construction: S-Flux proofed, SH-Sealed type washable
	Type Designation: SRI

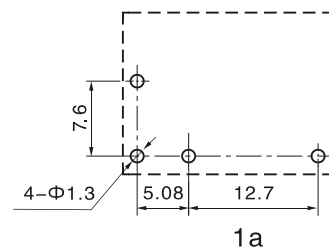
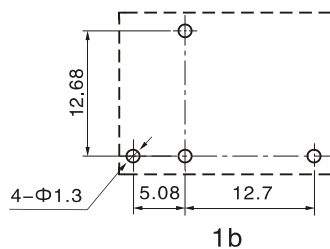
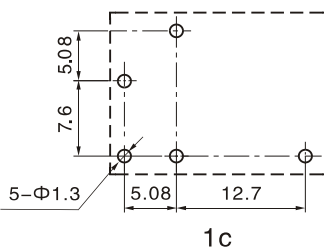
### Outline Dimensions, Wiring Diagram, P.C. Board Layout (unit: mm)



Unless otherwise specified:  
 If dimension < 1mm, tolerance: ± 0.2mm;  
 If dimension 1~5mm, tolerance: ± 0.3mm;  
 If dimension > 5mm, tolerance: ± 0.4mm.  
 Note: 1. Extended terminal dimension is dimension before soldering.  
 2. Tolerance of P.C.B. layout: ± 0.1mm.



Wiring Diagram (bottom view)



P.C.B. Layout (bottom view)

### Typical Applications

- Refrigeration equipment
- Audio system
- Automotive control device, etc.
- Automation, UPS
- Home appliances