

Features

- Advanced DEC DI1U technology and production line was introduced into from Japan.
- Small size (16.2x30x26), resistive rating: 25A.
- 250# quick connect terminal and PCB terminal types available.

Safety Approval

UL, C-UL File No.: E190598
 VDE File No.: 40002145
 CQC File No.: CQC02001002129
 TUV File No.: R50168240

Contact Capacity

Model	DI1U
Nominal switching capacity (res. load)	20A 250VAC
Max. switching current	25A
Max. switching voltage	277VAC
Max. switching power	6,250VA

Charateristic Data

Contact material	Silver alloy	
Initial contact resistance (at 6VDC 1A)	50mΩ Max.	
Operate time (at nominal volt.)	10msec. Max.	
Release time (at nominal volt.)	5msec. Max.	
Initial insulation resistance	1,000MΩ Min.(DC500V)	
Initial dielectric strength	Between open contacts: AC1,000V, 50/60Hz 1Min.	
	Between coil and contact: AC4,000V, 50/60Hz 1Min.	
Vibration resistance	Functional	10 ~ 55Hz at double amplitude of 1.5 mm
	Destructive	10 ~ 55Hz at double amplitude of 1.5 mm
Shock resistance	Functional	10G Min.
	Destructive	100G Min.
Endurance (operations)	Mechanical (at 10,800 ops./h)	10,000,000
	Electrical (at 900 ops./h)	100,000
Ambient temperature	-40°C ~ +105°C (no condensation)	
Unit weight	Approx. 28.0 g	

Coil Data (at 20°C)

Nominal voltage (VDC)	Nominal operating current ± 10% (mA)	Coil resistance ± 10% (Ω)	Max. allowable voltage	Pick-up voltage (Max.)	Drop-out voltage (Min.)	Nominal operating power
5	180.00	27.8	110 % of nominal voltage	80% of nominal voltage	5 % of nominal voltage	Approx. 0.90W
6	150.00	40				
9	100.00	90				
12	75.00	160				
18	50.00	360				
24	37.50	640				
48	18.75	2,560				

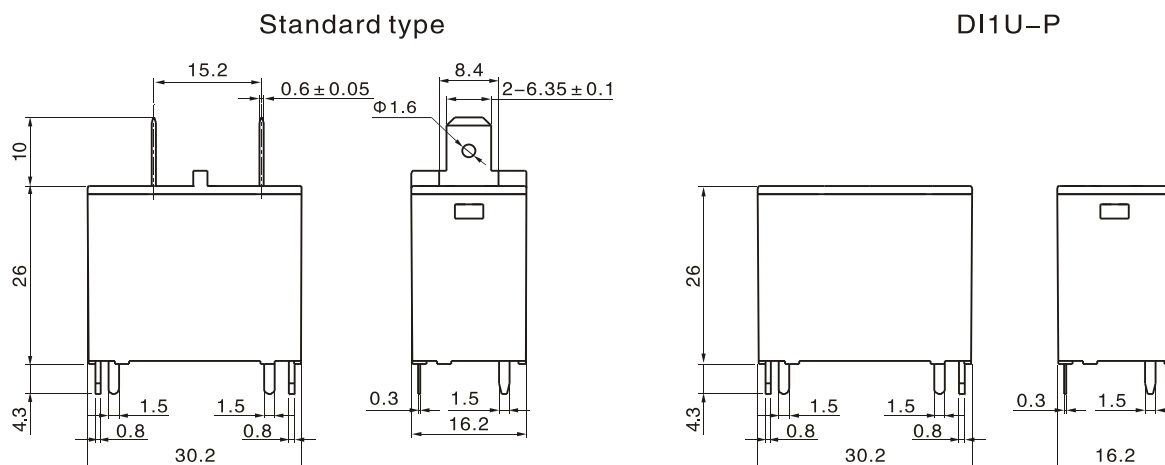
Safety Approval Ratings

Approval	CQC	TUV	VDE	UL/CUL
File No.	CQC02001002129	R50168240	40002145	E190598
Approved ratings	20A 250VAC	DI1U-K only: 25A 250VAC 20A 250VAC	20A 250VAC	DI1U & DI1U-P: 25A 250VAC, Resistive 15A 250VAC, General Use DI1U-K: 20A 250VAC, Resistive 20A 250VAC, General Use 25A 277VAC, Resistive 25A 277VAC, General Use 25A 250VAC, Resistive 25A 250VAC, General Use 1.5 HP 240VAC TV-10, 120VAC Pilot duty: A300, 120VAC & 240VAC

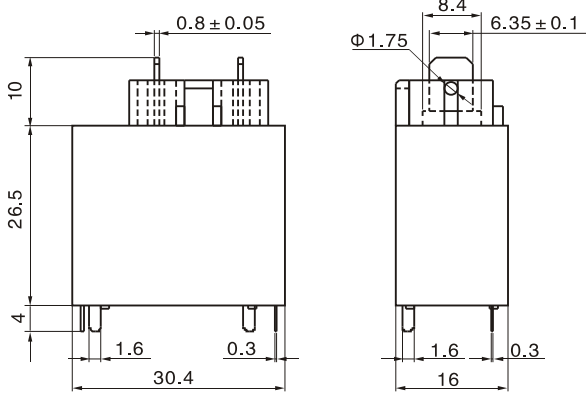
Ordering Information

Nomenclature						
DI1U	-1	12	D	M	P	- F - XX
Special Parameter: Nil-Standard type, Letter or number-Special requirement						
Insulation System: Nil-Standard, B-Class B, F-Class F						
Terminal Type: Nil-Standard, P-PCB, K-Protective quick connect terminal						
Contact Form: M-Form A						
Coil Power: D-0.90W						
Coil Voltage (VDC): 05, 06, 09, 12, 18, 24, 48						
Number of Poles: 1-1 Pole						
Type Designation: DI1U						

Outline Dimensions, Wiring Diagram, P.C. Board Layout (unit: mm)



DI1U-K

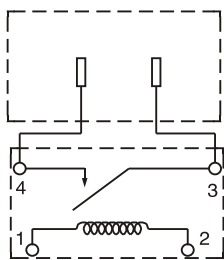


Unless otherwise specified:
 If dimension < 1mm, tolerance: $\pm 0.2\text{mm}$;
 If dimension 1~5mm, tolerance: $\pm 0.3\text{mm}$;
 If dimension > 5mm, tolerance: $\pm 0.4\text{mm}$.
 Note: 1. Extended terminal dimension is dimension before soldering.
 2. Tolerance of P.C.B. layout: $\pm 0.1\text{mm}$.

Standard type

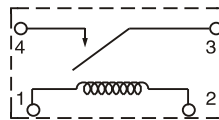
DI1U-P

DI1U-K

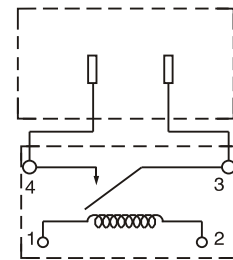


(top view)

(bottom view)



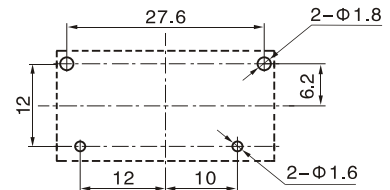
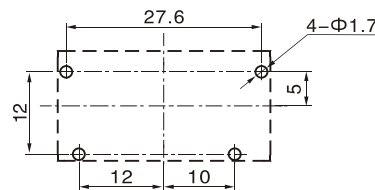
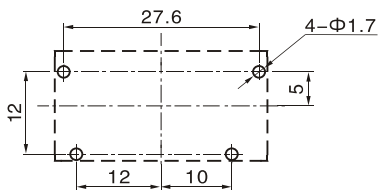
(bottom view)



(top view)

(bottom view)

Wiring Diagram



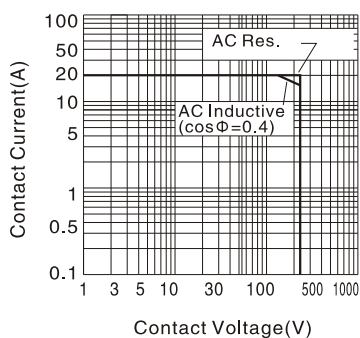
P.C.B. Layout (bottom view)

Typical Applications

- Air conditioner compressor and heater
- Fax machine, office equipment signal lamp and motor control
- Microwave oven magnetic control, etc.

Characteristic Curves

Max. Switching Power



Endurance Curve

